

iHealthcare

/ ICU & Emergency Room

/ Operating Room

/ Mobile Applications

/ Telehealth

/ Medical Specialty

/ Equipment HMI

Medical-Grade Point-of-Care Terminals Enhancing the Safety and Quality of Critical Care



ADVANTECH

Enabling an Intelligent Planet



IoT Solutions
Alliance
Premier

DeviceOn/iService



Medical-Grade, Point-of-Care Terminals

- ▶ Compliant with IEC 60601-1 medical safety standard
- ▶ COM and LAN ports with 1.5KV isolation protection

Critical Care

Critical care involves the careful diagnosis and management of life-threatening conditions by specially trained healthcare professionals, who use their expertise to provide quality patient care. Critical care is typically provided in an intensive care unit (ICU), emergency department, surgical area, or trauma center, where highly sophisticated equipment and computer systems are used to monitor patients' vital signs in real time. These real-time monitoring systems translate the collected physiological data into clinical information that assists healthcare professionals.

High-Performance Computing

8th gen Intel®
processor



NVME SSD

7x

faster than
traditional 2.5" SSD

Wireless-AC
2x2 solution

12x

faster than traditional
BGN 1x1 solutions

Modularized Design for Diverse Applications

- ▶ Easy upgrade if battery support is required
- ▶ Supports both POC-624 and POC-621 for easy switching
- ▶ Saves installation space for high scalability

Battery Module



Mobile Healthcare

The POC-6 series terminals feature a hot-swapping power system to facilitate mobile healthcare in a wide range of treatment settings.

Intuitive Battery LED Indicator

- ▶ Indicates the power and capacity of each battery
- ▶ Users can understand the battery status at a glance

Battery Life Optimization

- ▶ Batteries are protected from thermal heat for an extended lifespan



IP54-Rated Cover

- ▶ Protects against dust and water for superior infection control

Superior Infection Control



Disinfectant-tolerant enclosure



IP65-rated front panel
Entire system is IP54-rated



Fanless design

Space savings for high scalability



- ▶ SSD
- ▶ RAM
- ▶ RFID
- ▶ Mini PCIe
- ▶ Camera
- ▶ iDoor and Wi-Fi modules

Camera Module



Telemedicine Applications

The integrated 4K camera and sound bar module enable medical professionals to provide healthcare services remotely.

Sound Bar

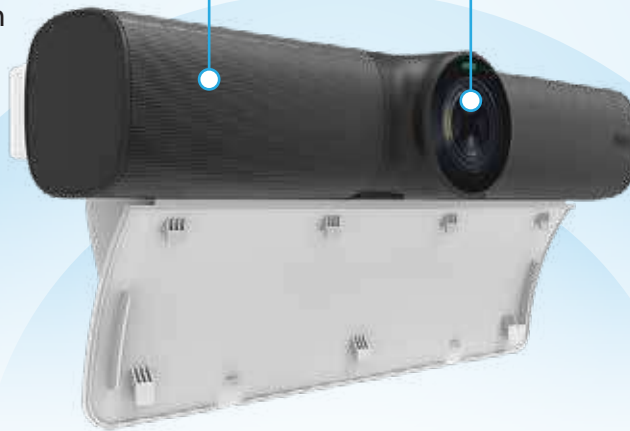
Clear Voice Transmissions

- ▶ Built-in omnidirectional microphone
- ▶ Automatic echo cancellation
- ▶ Automatic noise suppression

4K Camera

High-Quality Imaging

- ▶ Supports 4K imaging and video recording
- ▶ 4X ePTZ camera for rapid image adjustment



DeviceOn/iService

Remote Management

- ▶ Device status
- ▶ Device health monitoring
- ▶ Predictive maintenance of storage



Single Sign-On with RFID

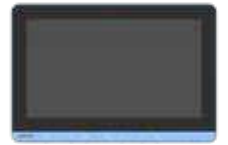
- ▶ Ultra-slim RFID reader
- ▶ Secure and easy identification
- ▶ Single RFID-enabled tag for multiple sign ons



3-Year Warranty

- ▶ RDT verification (Reliable Demonstration Testing)
- ▶ HALT verification (Highly Accelerated Life Test)

Specifications



		POC-624	POC-621	POC-615
System	Processor*	Intel® Core™ i7-8665UE (8M cache, up to 4.40 GHz) Intel® Core™ i5-8365UE (6M cache, up to 4.10 GHz)	Intel® Core™ i7-8665UE (8M cache, up to 4.40 GHz) Intel® Core™ i5-8365UE (6M cache, up to 4.10 GHz)	Intel® Core™ i7-8665UE (8M cache, up to 4.40 GHz) Intel® Core™ i5-8365UE (6M cache, up to 4.10 GHz)
	Memory (default)	8GB DDR4 (supports up to 32GB DDR4 SODIMM)	8GB DDR4 (supports up to 32GB DDR4 SODIMM)	8GB DDR4 (supports up to 32GB DDR4 SODIMM)
	Operating System (optional)	Windows 10 IoT Enterprise (64 bit), Linux (support upon request)	Windows 10 IoT Enterprise (64 bit), Linux (support upon request)	Windows 10 IoT Enterprise (64 bit), Linux (support upon request)
Storage	Primary Storage (default)	NVME SSD 256GB (M.2 2280)	NVME SSD 256GB (M.2 2280)	NVME SSD 256GB (M.2 2280)
	Secondary Storage (optional)	2.5" SATA SSD available	2.5" SATA SSD available	-
Display	Size	23.8 inch	21.5 inch	15.6 inch
	Max. Resolution	1920 x 1080 Full HD	1920 x 1080 Full HD	1920 x 1080 Full HD
Touch	Type	10-point P-CAP multi touch (clear glass); (optional AG/AR support upon request)	10-point P-CAP multi touch (clear glass); (optional AG/AR support upon request)	10-point P-CAP multi touch (clear glass); (optional AG/AR support upon request)
I/O	USB 3.2 Gen 2 (Type A)	2	2	2
	USB 3.2 Gen 2 (Type C)	1 (with display function)	1 (with display function)	1 (with display function)
	HDMI	1	1	1
	LAN isolation, 1.5KV	2	2	2
	USB 2.0 Type A	4	4	2
	Mic-In/Headphone Out	1/1	1/1	-
	COM (RS232) 1.5KV	2	2	1
Expansion Slots	PCIe x4	1 (card length: 167.65 mm/6.6 in)	1 (card length: 167.65 mm/6.6 in)	1 (card length: 167.65 mm/6.6 in)
	M.2 2230	1 (for Wi-Fi/Bluetooth modules)	1 (for Wi-Fi/Bluetooth modules)	1 (for Wi-Fi/Bluetooth modules)
	Mini PCIe	1 (full size)	1 (full size)	1 (full size)
Other Functions	Speaker	2 x 2W	2 x 2W	2 x 2W
	LED Book Light	2	2	2
	Camera	5 megapixel (optional)	5 megapixel (optional)	5 megapixel (optional)
	TPM 1.2/2.0	2.0 (default via software)	2.0 (default via software)	2.0 (default via software)
Power Input	DC/AC	DC: 18V, max. 100W/AC: 100 ~ 240V, max. 150W	DC: 18V, max. 100W/AC: 100 ~ 240V, max. 150W	DC: 18V, max. 100W
IP Rating	Front Panel	IP65	IP65	IP65
	System	IP54	IP54	IP43
Authentication Solution (Choose 1)	RFID	optional (choose either RFID or Smart Card)	optional (choose either RFID or Smart Card)	optional (choose either RFID or Smart Card)
	Smart Card Reader	optional (choose either RFID or Smart Card)	optional (choose either RFID or Smart Card)	optional (choose either RFID or Smart Card)
Battery Solutions (Choose 1)	Backup Battery	optional (choose either 1 backup battery or PCIe x4)	optional (choose either 1 backup battery** or PCIe x4)	optional (choose either 1 backup battery or PCIe x4)
	Hot-Swapping Battery Module	optional (choose either backup battery or battery module)	optional (choose either backup battery or battery module)	not applicable
Certification	EMC & Safety	Medical CE, FCC EN 60601-1 Compliance UL 60601-1	Medical CE, FCC EN 60601-1 Compliance UL 60601-1	Medical CE, FCC EN 60601-1 Compliance UL 60601-1
	Physical Characteristics	Dimensions W x H x D VESA Mount	583 x 387 x 68 mm/22.95 x 15.2 x 2.68 in 100 x 100; 75 x 75	524 x 357 x 62 mm/20.63 x 14.06 x 2.44 in 100 x 100; 75 x 75

* Intel® Celeron® processor available upon request

** If backup battery is chosen for POC-621, neither 2.5" SSD nor battery module can also be installed

Accessories



Battery Module

Battery Pack Type	Lithium-ion battery
Battery Pack Capacity	90Wh
Total Capacity	180W (2 x batteries, 90W per battery)
Battery Runtime	6 ~ 8 hours
Battery Lifespan	300 cycle time ≥ 70%
Capacity Indicator	LED indicator with button
Weight	0.5 kg/1.1 lb
Certification	Battery Pack: POC-IPSM90B UN38.3, UL2054+UL62368, CB(IEC 62133)

Camera Module

Camera	Max. Resolution	4K
	Zoom Adjustment	4X ePTZ
	Video Format	MJPEG/H.264/H.265/YUY2
	Frame	30/25/20/15/10/5 FPS
	Protocol	Std. UVC 1.0-1.5
Sound Bar	Speaker	8W 100-24KHz
	Microphone	Built-in omnidirectional microphone array
	Pickup Range	3 ~ 5 meters
Audio Features	Automatic echo cancellation Automatic noise suppression	

How to Disinfect POC-6 Terminals

01 Select an appropriate disinfectant.

	Disinfectant	Chemical Formula	Concentration
1	Alcohol	C ₂ H ₅ OH	75%
2	Glutaraldehyde	C ₅ H ₈ O ₂	2%
3	Isopropyl alcohol	(CH ₃) ₂ CHOH	70%
4	Sodium hypochlorite	NaOCl	10%

Verified Disinfectant



✓ Wipe **VersaSure™**
Disinfectant Wipes



✓ Spray **Clorox Healthcare®**
Hydrogen Peroxide Disinfectant Spray

02 Follow the instructions provided in the user manual or by the U.S. CDC to clean devices.

Regional Service & Customization Centers

China Kunshan 86-512-5777-5666	Taiwan Taipei 886-2-2692-6076	Netherlands Eindhoven 31-40-267-7000	Poland Warsaw 48-22-31-51-100	USA Milpitas, CA 1-408-519-3800
---	--	---	--	--

Worldwide Offices

Greater China

China	
Toll Free	800-810-0345
Beijing	86-10-6298-4346
Shanghai	86-21-3632-1616
Shenzhen	86-755-8212-4222
Chengdu	86-28-8545-0198
Hong Kong	852-2720-5118

Taiwan	
Toll Free	0800-777-111
Neihu	886-2-2792-7818
Xindian	886-2-2218-4567
Taichung	886-4-2378-6250
Kaohsiung	886-7-229-3600

Asia Pacific

Japan	
Toll Free	0800-500-1055
Tokyo	81-3-6802-1021
Osaka	81-6-6267-1887

Korea	
Toll Free	080-363-9494
Seoul	82-2-3663-9494

Singapore	
Singapore	65-6442-1000

Malaysia	
Toll Free	1800-88-1809
Kuala Lumpur	60-3-7725-4188
Penang	60-4-537-9188

Thailand	
Bangkok	66-2-248-3140

India	
Toll Free	1800-425-5070
Bangalore	91-80-2545-0206

Indonesia	
Jakarta	62-21-769-0525

Australia	
Toll Free	1300-308-531
Melbourne	61-3-9797-0100
Sydney	61-2-9476-9300

Europe

Germany	
Toll Free	00800-2426-8080
Munich	49-89-12599-0
Düsseldorf	49-2103-97-855-0

France	
Paris	33-1-4119-4666

Italy	
Milano	39-02-9544-961

Benelux & Nordics	
Breda	31-76-5233100

UK	
London	44 (0)20 8317 1380

Poland	
Warsaw	48-22-33-23-740 / 41

Russia	
Toll Free	8-800-555-01-50
Moscow	7-495-232-1692

Spain	
Madrid	34-91-668-86-76

Sweden	
Stockholm	46 (0)8 64 60 500

Ireland	
Galway	353-91-792444

Czech Republic	
Ústí nad Orlicí	+420-465-52-44-21

Americas

North America	
Toll Free	1-888-576-9668
Cincinnati	1-513-742-8895
Milpitas	1-408-519-3898
Irvine	1-949-420-2500

Brazil	
Toll Free	0800-770-5355
Saude-São Paulo	55-11-5592-5355

Mexico	
Toll Free	1-800-467-2415
Mexico City	52-55-6275-2777

ADVANTECH

Enabling an Intelligent Planet

www.advantech.com

Please verify specifications before ordering. This guide is intended for reference purposes only. All product specifications are subject to change without notice. No part of this publication may be reproduced in any form or by any means, electronic, photocopying, recording or otherwise, without prior written permission of the publisher. All brand and product names are trademarks or registered trademarks of their respective companies. © Advantech Co., Ltd. 2019